

1102-18 HINGE TEMPLATE

MODEL 1102, 1104, 1106 & 1108

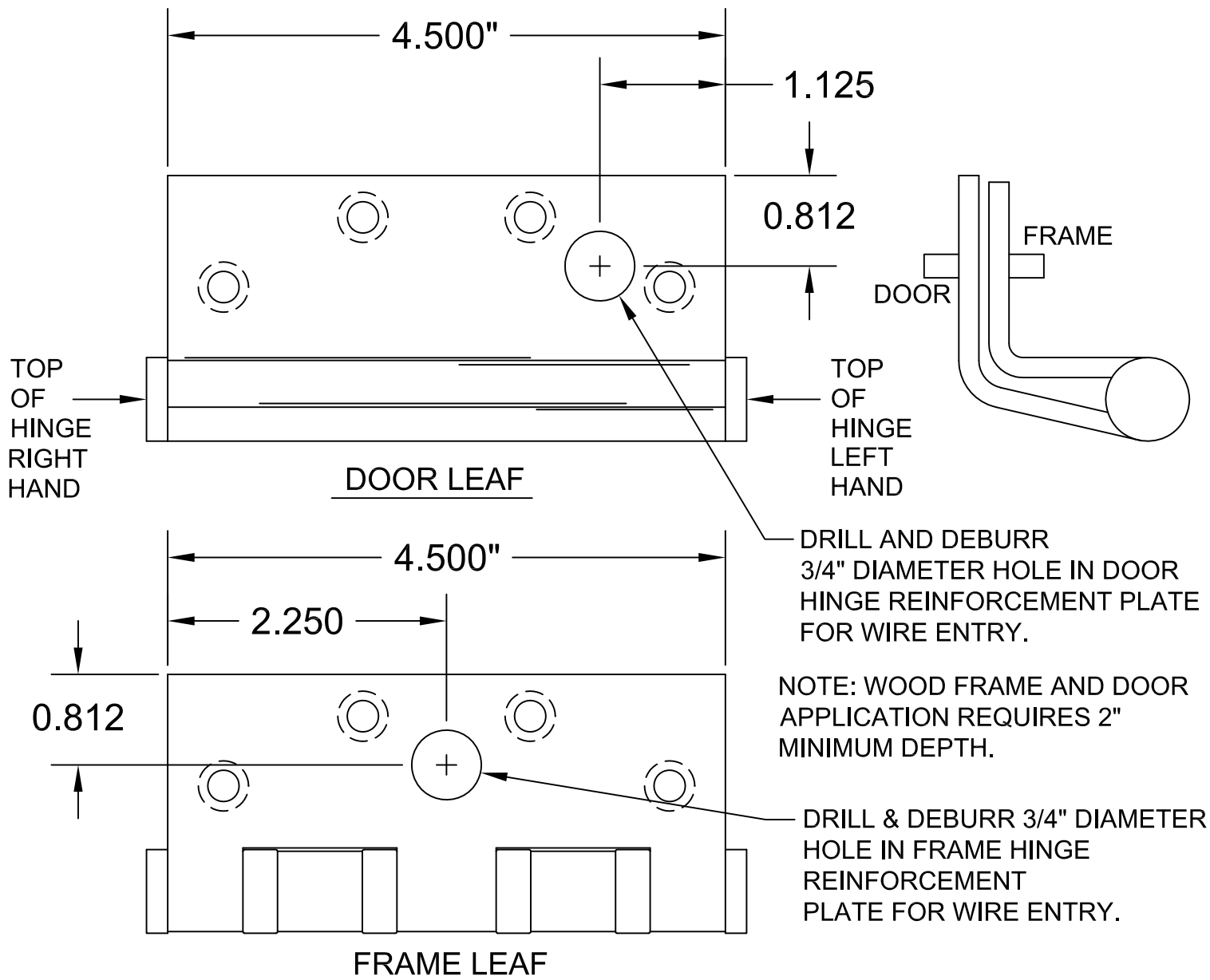
CONCEALED ELECTRIC THROUGH WIRE HINGE

FOR USE WITH ALL MANUFACTURERS

4.5" FULL MORTISE SWING CLEAR

3 & 5 KNUCKLE BALL BEARING

HINGES STANDARD AND HEAVY WEIGHT



ARCHITECTURAL
CONTROL SYSTEMS,
INCORPORATED

HINGES ARE NON-LOAD BEARING
AND MUST BE MOUNTED
IN THE CENTER POSITION ONLY.