

1102-19 HINGE TEMPLATE

MODEL 1102, 1104, 1106 & 1108

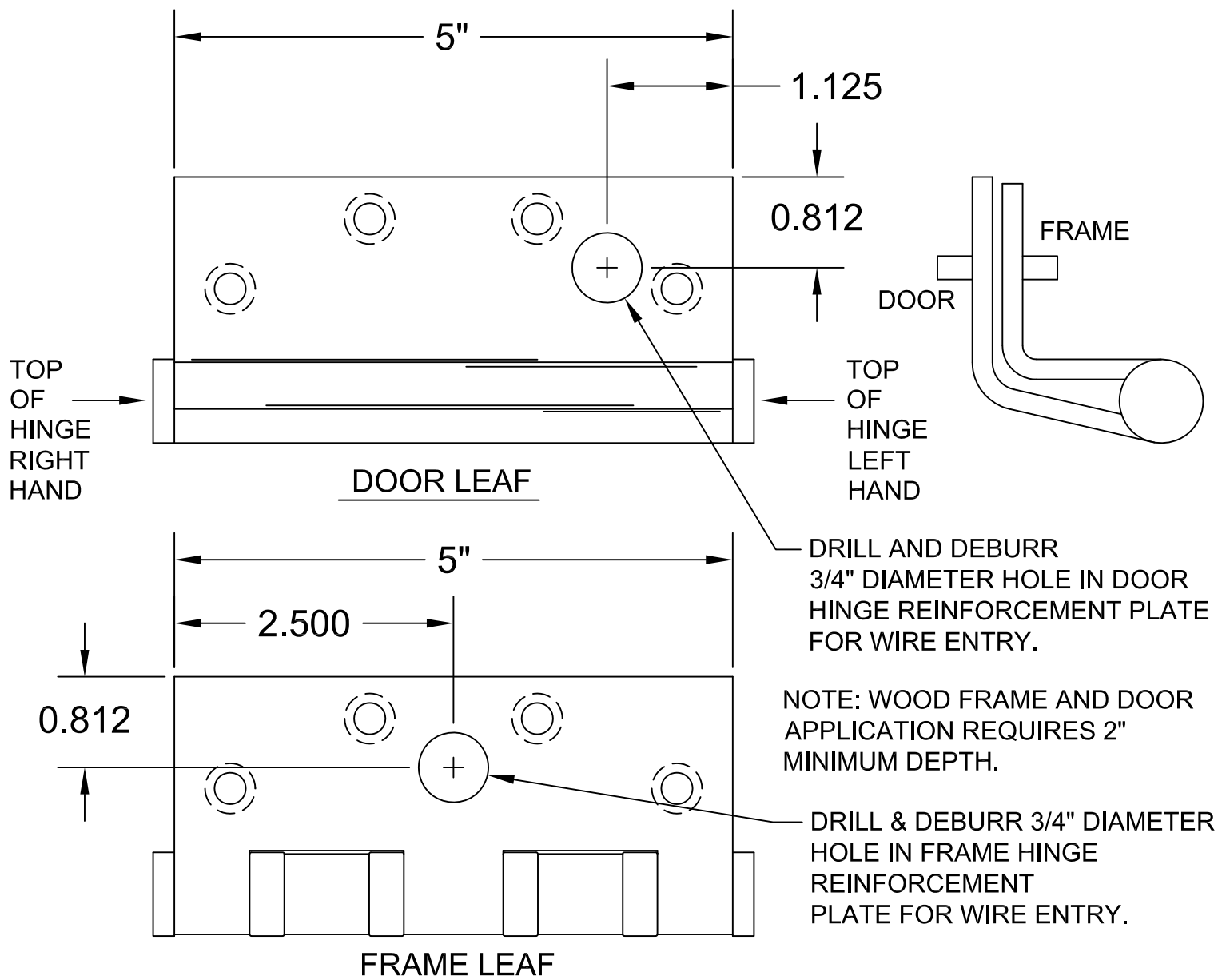
CONCEALED ELECTRIC THROUGH WIRE HINGE

FOR USE WITH ALL MANUFACTURERS

5.0" FULL MORTISE SWING CLEAR

3 & 5 KNUCKLE BALL BEARING

HINGES STANDARD AND HEAVY WEIGHT



HINGES ARE NON-LOAD BEARING
AND MUST BE MOUNTED
IN THE CENTER POSITION ONLY.