

# EXIT DEVICE INSTALLATION INSTRUCTIONS

## K-125 SWITCH KIT

DORMA 9000 SERIES EXIT DEVICES

SWITCH MONITORS EGRESS BY PUSHBAR ACTIVATION OF EXIT DEVICE

### INSTALLATION INSTRUCTIONS

STEP 1: REMOVE DEVICE FROM DOOR IF APPLICABLE.

STEP 2: SLIDE END COVER OFF OF DEVICE.

STEP 3: REMOVE 2 SCREWS THAT HOLD HEAD ASSEMBLY TO CHANNEL AND REMOVE HEAD.

STEP 4: REMOVE SIX SCREWS FROM BACK OF DEVICE AND SLIDE PUSH-BAR ASSEMBLY OUT OF CHANNEL.

STEP 5: REMOVE E-CLIP FROM REAR PIVOT ASSEMBLY ON SIDE THAT IS SHOWN IN ILLUSTRATION.

STEP 6: INSTALL SWITCH KIT K-125 ONTO PIVOT PIN AND REASSEMBLE E-CLIP.

(NOTE: MAKE SURE THAT SWITCH ARM IS LOCATED UNDER PIVOT ARM AS SHOWN IN ILLUSTRATION).

STEP 7: CHECK FOR PROPER SWITCH ACTIVATION WHEN PUSHBAR IS FULLY DEPRESSED,

REFER TO COLOR CODE CHART FOR PROPER WIRING PER APPLICATION.

STEP 8: MAKE SURE COLOR CODE FOR WIRES CHART IS USED FOR PROPER HOOK-UP OF SWITCH CONTACTS.

STEP 9: RE-ASSEMBLE EXIT DEVICE. (REVERSE STEPS 1 THROUGH 4)

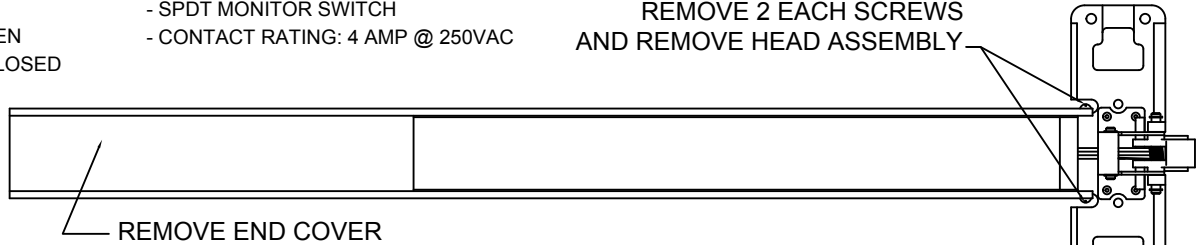
### COLOR CODE FOR WIRES

- YELLOW WIRE: COMMON
- RED WIRE: NORMALLY OPEN
- GRAY WIRE: NORMALLY CLOSED

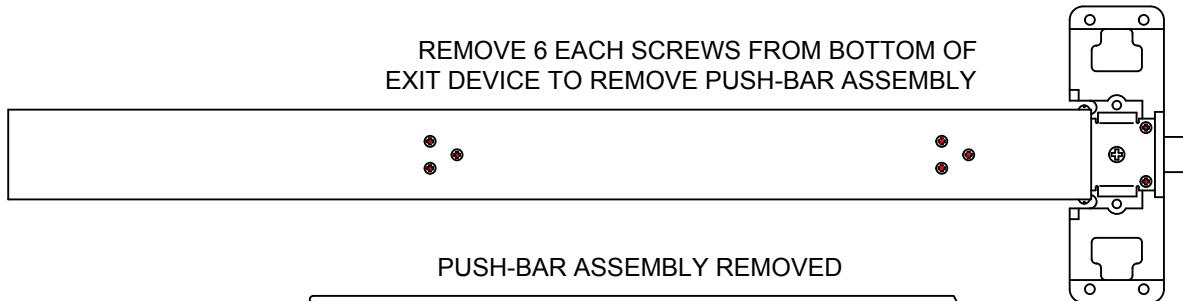
### ELECTRICAL SPECIFICATIONS

- SPDT MONITOR SWITCH
- CONTACT RATING: 4 AMP @ 250VAC

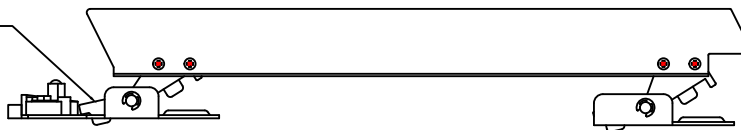
REMOVE 2 EACH SCREWS  
AND REMOVE HEAD ASSEMBLY



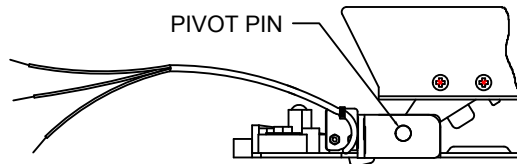
REMOVE 6 EACH SCREWS FROM BOTTOM OF  
EXIT DEVICE TO REMOVE PUSH-BAR ASSEMBLY



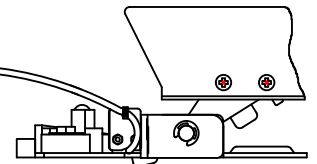
REAR PIVOT  
ASSEMBLY



PIVOT PIN

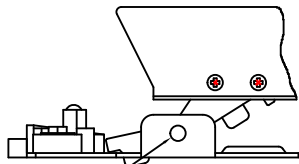


MOUNT SWITCH ONTO  
PIVOT PIN

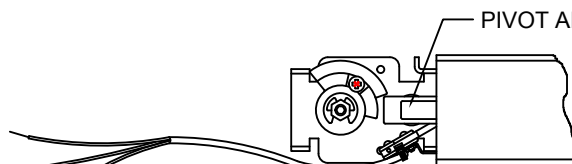


REASSEMBLE E-CLIP TO  
RETAIN SWITCH ASSEMBLY.

REMOVE E-CLIP



PIVOT ARM



MAKE SURE SWITCH ARM  
IS LOCATED UNDER PIVOT ARM

