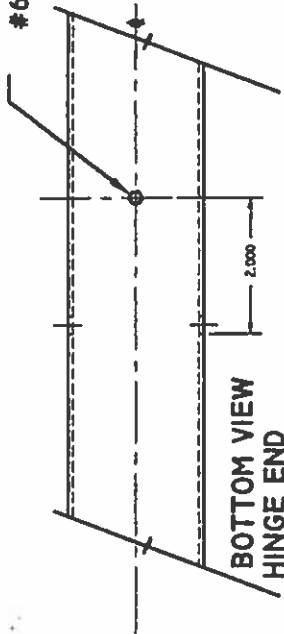


DRILL AND COUNTER SINK FOR #6-32 FHMS (THRU.)

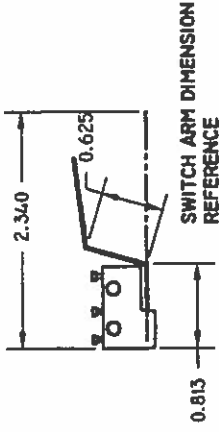


BOTTOM VIEW
HINGE END

MODIFICATION INSTRUCTIONS

- 1.) FROM THE BOTTOM OF THE BASE, DIMENSION, DRILL AND COUNTERSINK FOR #6-32 X 3/16" FLAT HEAD MACHINE SCREW (PROVIDED WITH KIT).

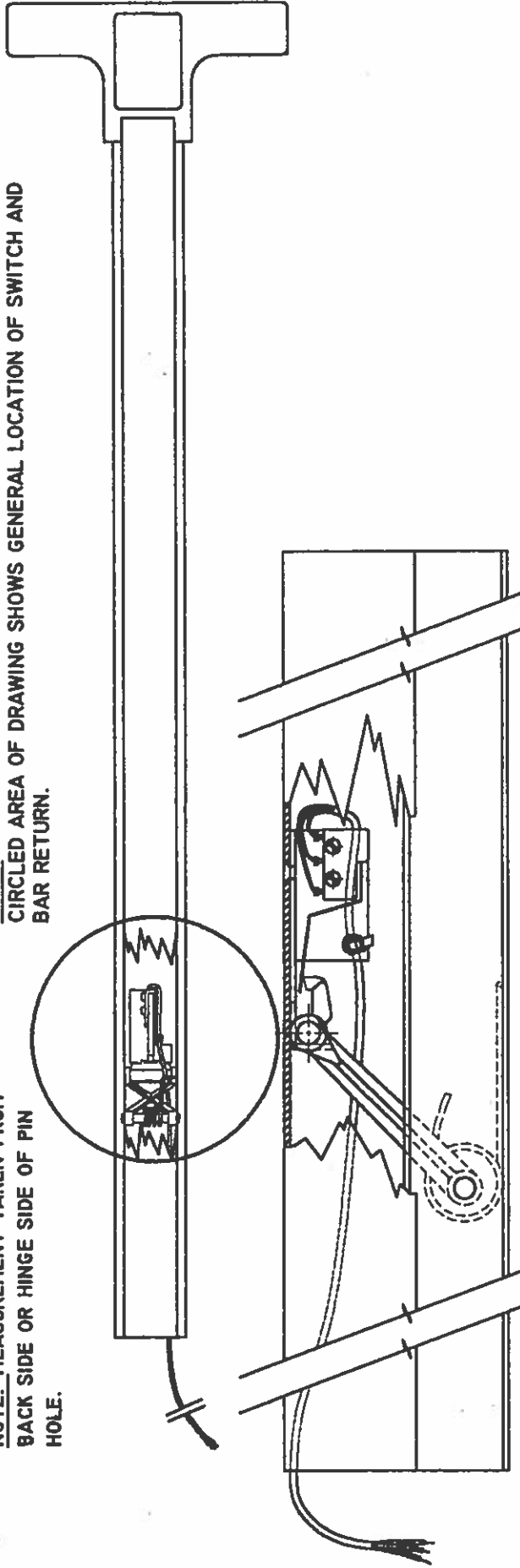
- NOTE: HOLE CENTERED ON CENTER LINE OF THE DEVICE AND 2" FROM THE BACK EDGE OF THE PIVOT HOLE.
- 2.) DEBURR SURFACE.



SWITCH ARM DIMENSION REFERENCE

NOTE: MEASUREMENT TAKEN FROM BACK SIDE OR HINGE SIDE OF PIN HOLE.

NOTE: CIRCLED AREA OF DRAWING SHOWS GENERAL LOCATION OF SWITCH AND BAR RETURN.



HINGE END

SIDE VIEW

HEAD END

SIDE CUT AWAY TO EXPOSE BRACKET, SWITCH AND RELATED MECHANICS.

INSTALLATION INSTRUCTIONS

START BY SLIDING BASE INTO PLACE OVER HEAD END BAR RETURN MECHANISM TO ABOUT HALF WAY. PLACE RIGHT ANGLED END OF SWITCH BRACKET INTO OPENING OF THE HINGE END BAR RETURN (AS SHOWN) HOLDING LIGHT STRAIN ON WIRES TO HOLD BRACKET IN PLACE AT HINGE END OF DEVICE. CONTINUE HOLDING STRAIN AND FINISH SLIDING BASE OVER SWITCH AND HINGE END RETURN MECHANISM, WATCHING FOR HOLE IN BASE TO ALIGN WITH THREADED HOLE IN SWITCH. START #6-32 FHMS THROUGH BASE INTO SWITCH BRACKET, BEFORE SECURING SCREW REPLACE PIVOT PIN AND FINISH TIGHTENING SCREW (DO NOT LOCKTITE THREADS UNTIL SWITCH HAS BEEN TESTED). TEMPORARILY CONNECT WIRES AND TEST SWITCH. NOTE: SWITCH MOST ACTIVATE BETWEEN ONE QUARTER AND ONE HALF DEPRESSION OF BAR. IF SWITCH IS NOT OPERATING OR AT THE WRONG POINT OF DEPRESSION, SHINE LIGHT INSIDE BAR AND BASE, NOTE POSITION OF SWITCH LEVER, IT SHOULD BE AS SHOWN IN DRAWING. BETWEEN MECHANISM TAB AND BASE. ONCE TESTING IS COMPLETE LOOSEN SCREW, LOCKTITE, AND SECURE.