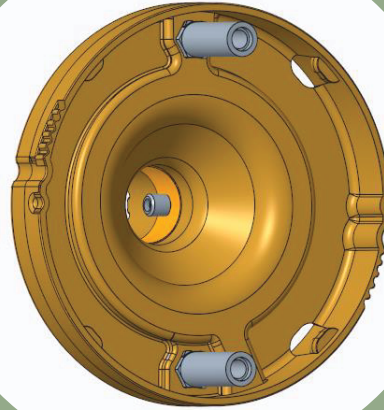
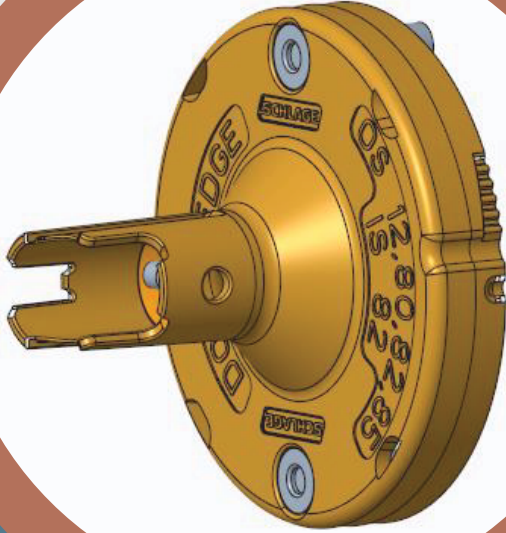


NEW SPINDLE ASSEMBLY FOR SCHLAGE ND SERIES



ACSI
ARCHITECTURAL
CONTROL SYSTEMS INC.

**Schlage ND Series is transitioning
to a new rigid lever spindle**

What does this mean for ACSI and our Customers?

With this change to the Schlage ND80 model (Storeroom Function) to go to a rigid outside lever assembly instead of the spring cage version, ACSI will no longer be able to modify this new version of the ND80 for lock/unlock. ACSI can provide AE only.

Architectural Control Systems will still be able to modify the original version that comes with the outside spring cage. The original versions are all produced prior to February 26, 2023. This new implementation went into effect on February 27, 2023.

ACSI will still be able to supply all of your ND80 EL/EU requirements. Moving forward ACSI will be able to modify the ND70 model for lock/unlock and AE. We will still be able to modify the ND94 model, which has not changed.

All ACSI electric cylindrical modifications will remain field adjustable for fail safe/fail secure function and automatically adjust for 12V/24V, AC or DC operation.

As always we value our customers and want to keep you informed on the latest news. If you would like more information please contact our sales department at sales@acsi-inc.com or give us a call at 800-753-5558.