

# EXIT DEVICE INSTALLATION INSTRUCTIONS

## K-110 SWITCH KIT

### MONARCH 18 AND 19 SERIES EXIT DEVICES

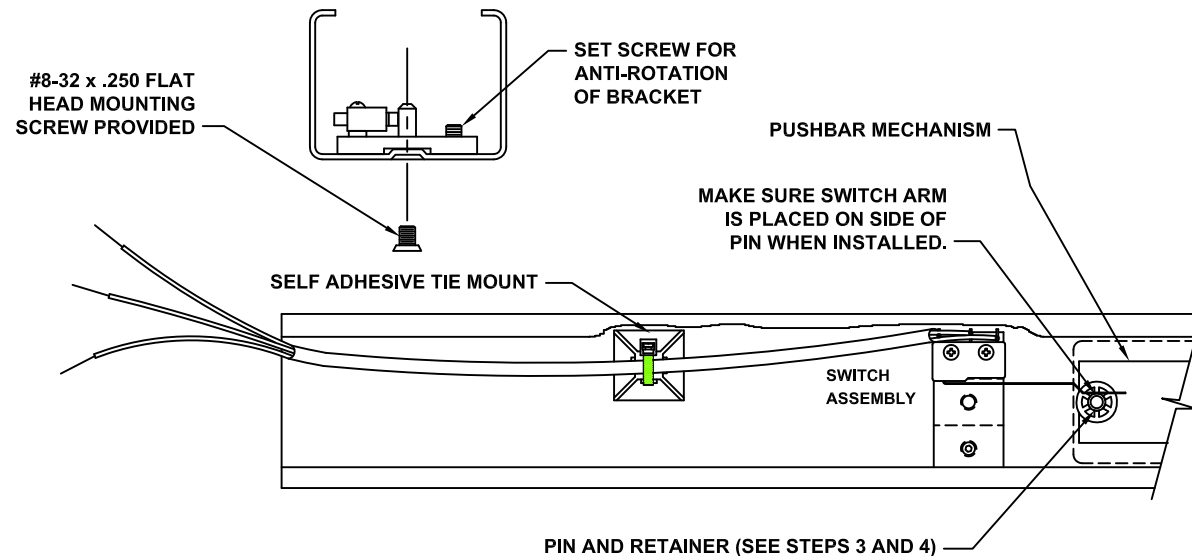
### SWITCH MONITORS EGRESS BY PUSHBAR ACTIVATION OF EXIT DEVICE

#### ELECTRICAL SPECIFICATIONS

- SPDT MONITOR SWITCH
- CONTACT RATING: 4 AMP @ 250VAC

#### COLOR CODE FOR WIRES

- YELLOW WIRE: COMMON
- RED WIRE: NORMALLY OPEN
- GRAY WIRE: NORMALLY CLOSED



#### INSTALLATION INSTRUCTIONS

STEP 1: REMOVE REAR COVER FROM END OF DEVICE.

STEP 2: SEPERATE PUSHBAR MECHANISM FROM MAIN CHANNEL ON FIRE EXIT DEVICES ONLY IF THE FACTORY DOGGING PIN AND RETAINER ARE NOT INCLUDED.

STEP 3: IF USING FIRE EXIT HARDWARE AND NEED TO INSTALL PIN AND RETAINER, INSTALL AS SHOWN ONTO PUSHBAR MECHANISM.

IF USING PANIC HARDWARE REMOVE PUSHBAR DOGGING ASSEMBLY FROM MAIN CHANNEL. (NOTE: USE EXISTING DOGGING PIN AND RETAINER)

STEP 4: RE-INSTALL PUSHBAR MECHANISM INTO TRIM CHANNEL AND SECURE WITH ORIGINAL SCREWS.

STEP 5: PLACE SWITCH ASSEMBLY INTO DEVICE AS SHOWN. ASSEMBLY FITS OVER TOP OF EXISTING COUNTERSUNK HOLE.

STEP 6: MAKE SURE SWITCH ARM IS PLACED ON OUTSIDE OF PIN SO THAT THE SWITCH IS PREACTIVATED.

STEP 7: USE PROVIDED FLAT HEAD SCREW TO SECURE SWITCH ASSEMBLY TO TRIM CHANNEL, MAKE SURE BRACKET IS PROPERLY ALIGNED IN CHANNEL.

STEP 8: CHECK FOR PROPER SWITCH ACTIVATION WHEN PUSHBAR IS FULLY DEPRESSED, THEN TIGHTEN SET SCREW TO PREVENT SWITCH ASSEMBLY FROM ROTATING.

STEP 9: SECURE SELF ADHESIVE TIE MOUNT HOLDER TO BOTTOM OF CHANNEL AS SHOWN.

NOTE: WHEN INSTALLING COVER ON PANIC DEVICES IT IS NECESSARY TO TURN THE DOGGING MECHANISM IN COVER TO AVOID INTEFERENCE WITH THE TIE MOUNT.

STEP 10: MAKE SURE COLOR CODE FOR WIRES CHART IS USED FOR PROPER HOOK-UP OF SWITCH CONTACTS.

